



# Apt 305 Chorlton Mill, 3 Cambridge Street, Manchester, M1 5BZ

Jordan Fishwick are delighted to bring to the market this one bedroom corner aspect 3rd floor apartment, in one of Manchester's most popular conversion developments, Chorlton Mill. This particular apartment is one of the few that has a wraparound south facing balcony around the chimney breast. The apartment benefits from original features such as exposed brickwork, cast iron columns and solid wood flooring. A perfect apartment for a first time buyer or professional couple wanting an immaculate apartment full of character within a short stroll of Oxford Road and Whitworth Street West. On site concierge. Accommodation comprises of spacious hall, utility room, open plan living/kitchen, double bedroom, and an attractive, newly renovated bathroom. NO ONWARD CHAIN.

## Price £224,950

### Viewing arrangements

Viewing strictly by appointment through the agent

245 Deansgate, Manchester, M3 4EN 0161 833 9499 opt 3

### Entrance Hallway

Spacious entrance hallway with utility cupboard. Doors leading to all rooms. Wooden flooring.

### Utility Room

Wood laminate flooring, washing machine.

### Living Room

23'11" x 11'10"

Stunning corner aspect living area with exposed brickwork, two double glazed windows and french doors opening to balcony. Radiators. Television and telephone connection point.

### Kitchen

Open through to kitchen. With wall and base units with oven, hob, extractor hood, fridge/freezer and dishwasher.

### Bedroom

9'6" x 12'2"

Wood flooring, exposed brickwork, double glazed window. Radiator

### Bathroom

Newly fitted three piece suite with shower attachment. Heated towel rail. Wash hand basin. W/C. Mirrored vanity unit. Part tiled walls.

## Additional Info

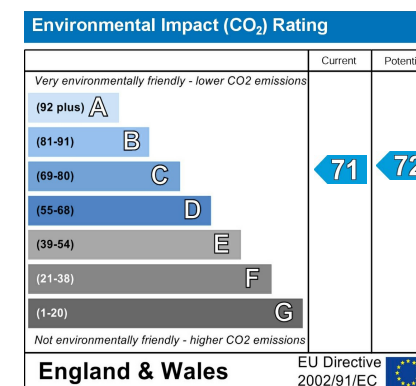
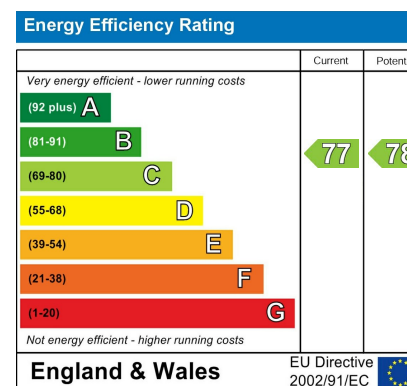
Service Charge: £3400 per annum

Ground Rent: £150 per annum

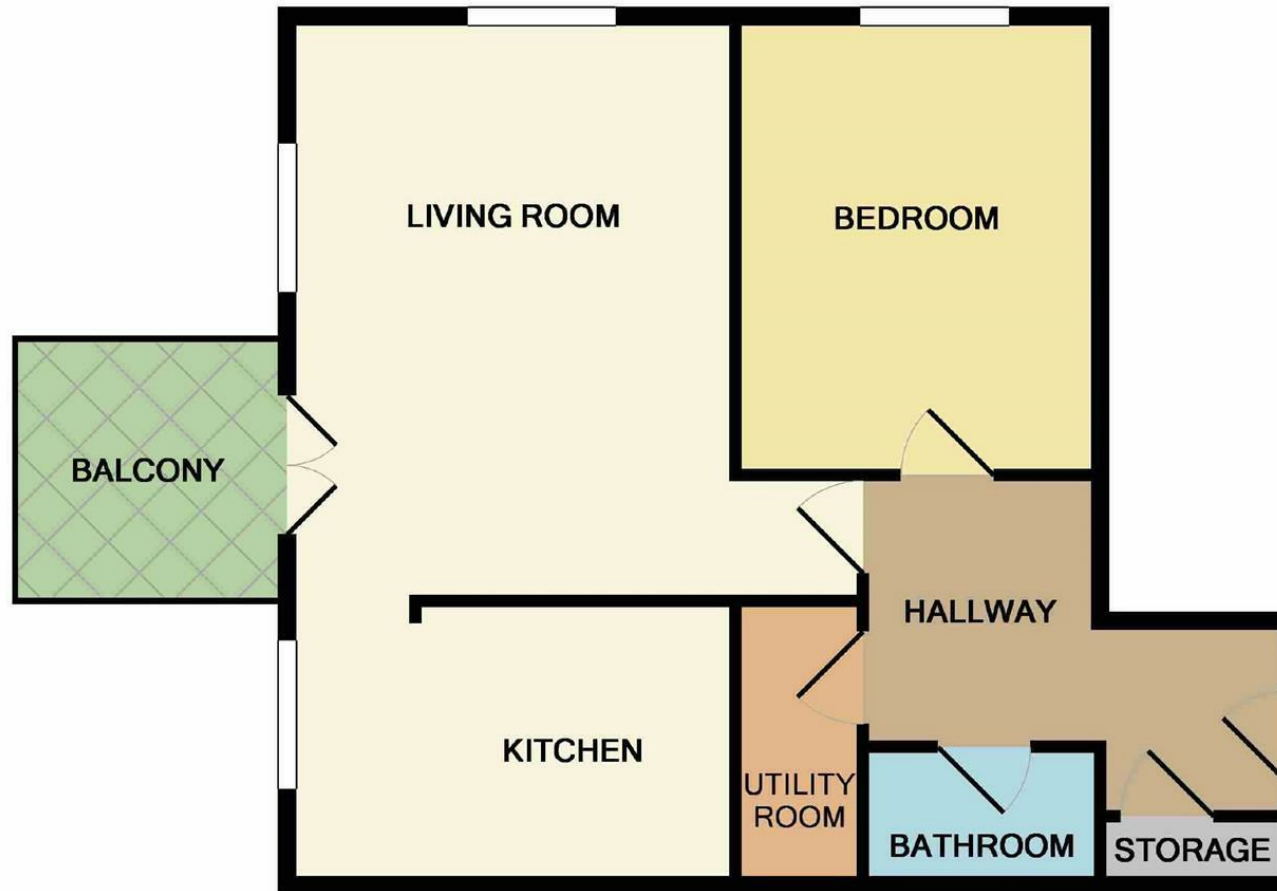
Lease: 999 years from 2004

## Disclaimer

IMPORTANT NOTE TO PURCHASERS: We endeavour to make our sales particulars accurate and reliable, however, they do not constitute or form part of an offer or any contract and none is to be relied upon as statements of representation or fact. The services, systems and appliances listed in this specification have not been tested by us and no guarantee as to their operating ability or efficiency is given. All measurements have been taken as guide to prospective buyers only, and are not precise. If floor plans where included, these may not be to scale and accuracy is not guaranteed. If you require clarification or further information on any points, please contact us.







Measurements are approximate. Not to scale. Illustrative purposes only  
Made with Metropix ©2019



These particulars are believed to be accurate but they are not guaranteed and do not form a contract. Neither Jordan Fishwick nor the vendor or lessor accept any responsibility in respect of these particulars, which are not intended to be statements or representations of fact and any intending purchaser or lessee must satisfy himself by inspection or otherwise as to the correctness of each of the statements contained in these particulars. Any floorplans on this brochure are for illustrative purposes only and are not necessarily to scale.

Offices at: Chorlton, Didsbury, Disley, Hale, Glossop, Macclesfield, Manchester Deansgate, Manchester Whitworth Street, New Mills, Sale, Wilmslow and Withington

245 Deansgate, Manchester, M3 4EN

0161 833 9499 opt 3

[manchester@jordanfishwick.co.uk](mailto:manchester@jordanfishwick.co.uk)

[www.jordanfishwick.co.uk](http://www.jordanfishwick.co.uk)

